

# Copeland



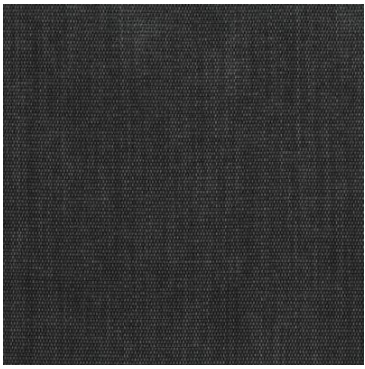
Bark



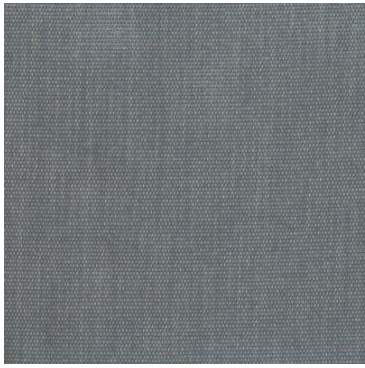
Birch



Brick



Charcoal



Cloud



Denim



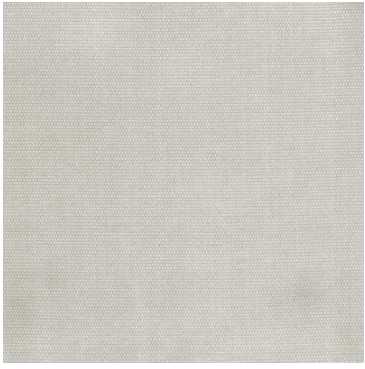
Dusk



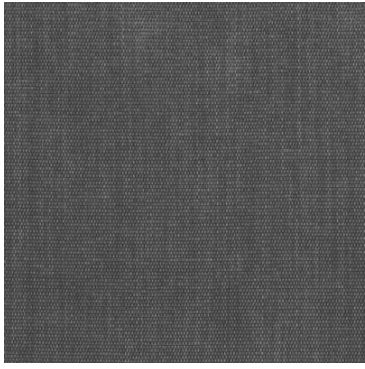
Ecrú



Eucalyptus



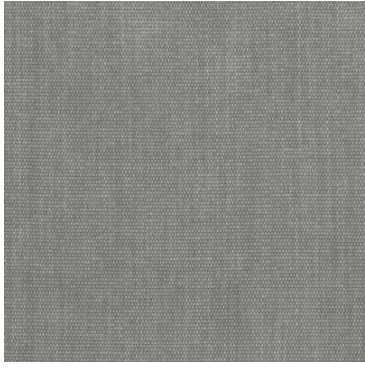
Frost



Granite



Greenstone



Gull



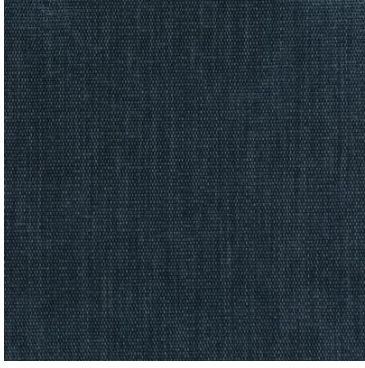
Hazel



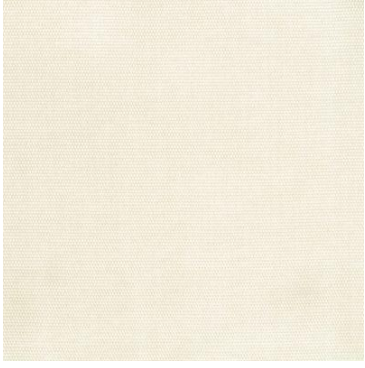
Honey



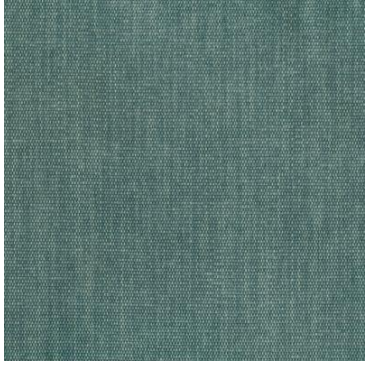
Hunter



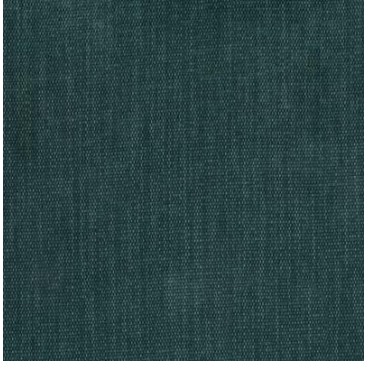
Ink



Ivory



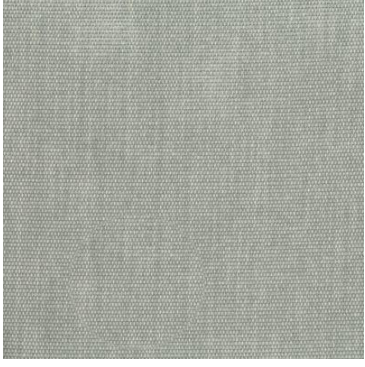
Lagoon



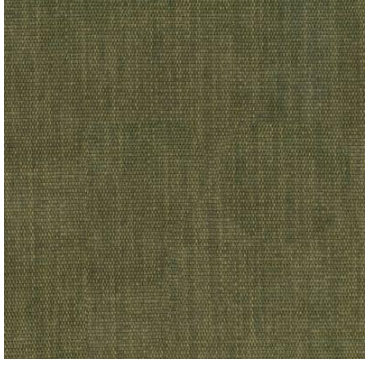
Mallard



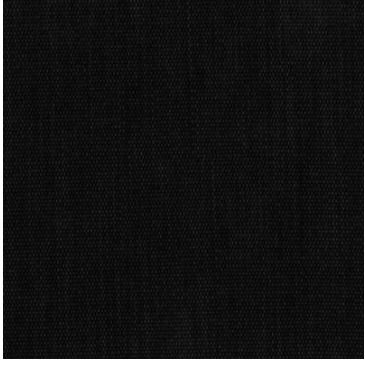
Marl



Mist



Olive



Onyx



Opal



Praline



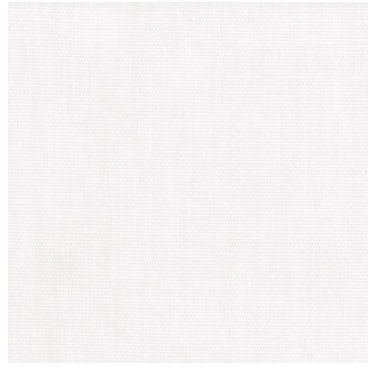
Pumice



Raisin



Rosebud



Snow



Spruce



Sumac

## Copeland

Colour(s)	Bark, Birch, Brick, Charcoal, Cloud, Denim, Dusk, Ecru, Eucalyptus, Frost, Granite, Greenstone, Gull, Hazel, Honey, Hunter, Ink, Ivory, Lagoon, Mallard, Marl, Mist, Olive, Onyx, Opal, Praline, Pumice, Raisin, Rosebud, Snow, Spruce, Sumac
Product Type(s)	Heavy Commercial
Attributes	Halo Easy Care, Washable
Styles	Industrial, Modern, Plain, Texture
Composition	100% Polyester
Pattern Match	No
Pattern Repeat (cm)	Plain
Railroaded	Yes
Width (cm)	140CM
Roll Size (approx)	40m
Weight (gsm)	420.0
Stain Repellent	No
FIAA Care Label	Label FW - Fixed Cover and Was
Guarantee	3 Years in accordance with our product type and care instructions

## Test Results

Wyzenbeek (ASTM D3597, mesh, 4lb/3lb)	100,000 Cycles
Seam Slippage (ISO 13936-2, Load 180)	Warp 3.1, Weft 3.6
Piling Resist (ISO 12945-2)	5
Colourfastness to Light Xenon arc (ISO 105-B02, blue std 6)	5
Colourfastness to Rubbing (ISO 105-X12)	Dry 5, Wet 4/5
Free and Hydrolysed Formaldehyde (ISO 14184-1:1998)	Yes
Flammability AS/NZS 1530.3 - 1999	
Ignitability (0-20)	12
Spread of Flame (0-10)	0
Heat Involved (0-10)	2
Smoke Developed (0-10)	4