

Synergy



Congregate
LDS83



Affinity
LDS74



Fate
LDS07



Venture
LDS05



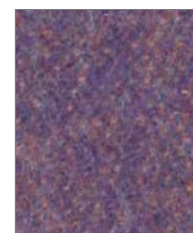
Mutual
LDS84



Likeness
LDS82



Work
LDS73



Fellowship
LDS66



Share
LDS85



Similar
LDS81



Contribution
LDS75



Compose
LDS72



Warmth
LDS67



Global
LDS86



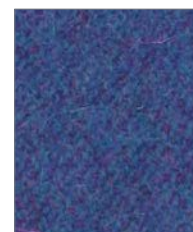
Apt
LDS80



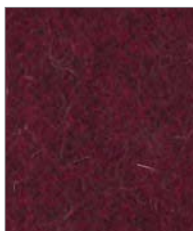
Success
LDS76



Open
LDS71



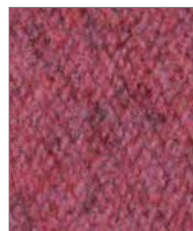
Collaborate
LDS68



Values
LDS87



Combo
LDS77



Medley
LDS36



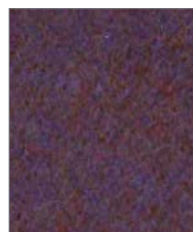
Process
LDS88



Amiable
LDS79



Cordial
LDS78



Together
LDS70



Sync
LDS69



Huddle
LDS65



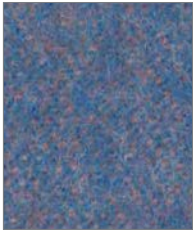
Support
LDS55



Regard
LDS54



Summon
LDS45



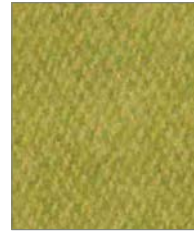
Order
LDS64



Kinship
LDS56



Pact
LDS53



Gather
LDS46



Relate
LDS44



Guild
LDS63



Engage
LDS57



Comply
LDS52



Integrate
LDS47



Lateral
LDS28



Family
LDS58



Kindness
LDS51



Interfuse
LDS48



Alike
LDS62



Group
LDS59



League
LDS50



Append
LDS49



Marry
LDS43



Assemble
LDS61



Accord
LDS60



Couple
LDS41



Intertwine
LDS42



Loop
LDS18



Bracket
LDS23



Chain
LDS19



Chemistry
LDS35



Affix
LDS32



Serendipity
LDS08



Frame
LDS22



Tag
LDS33



Partner
LDS16



Level
LDS20



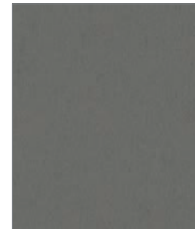
Team
LDS21



Linea
LDS37



Unity
LDS38



Pair
LDS31



Bond
LDS24



Collective
LDS39



Mix
LDS17



Hook
LDS29



Compound
LDS25



Co-operate
LDS40



Bridge
LDS26

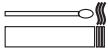


Wed
LDS34



Seek
LDS27

Synergy



E

Composition	95% Virgin Wool, 5% Polyamide. Non metallic dyestuffs.
Width	140cm minimum
Weight	400g/m2 ±5% (560g/lin.m. ±5%)
Abrasion	100,000 Martindale cycles 5 year guarantee (full details available)
Flammability	AS 1530.3, BS EN 1021 - 1:2014 (cigarette) BS EN 1021 - 2:2014 (match) BS 7176:2007 Low Hazard UNI 9175 Class 11M Optional - please specify when ordering: BS 5852:2006 Section 4 Ignition Source 5 when FR treated BS 7176:2007 Medium Hazard when FR treated Note: Flammability performance is dependent on foam used.
Light Fastness	5 (ISO 105 - B02:2014)
Fastness to Rubbing	Wet: 4 Dry: 4 (ISO 105 - X12:2002)
Maintenance	Vacuum regularly. Professionally dry clean or wipe clean with a damp cloth.

Please note that ultimate seam performance is dependent on seam construction, and needle and thread type. We recommend that appropriate sewing advice be taken.
Note: We reserve the right to alter technical specifications without notice.
The Unregistered Design Rights and the Copyright in all designs are the exclusive property of Camira Fabrics Limited.

F

Composition	95% Laine Vierge, 5% Polyamid. Teintures non métalliques.
Largeur	140cm minimum
Poids	400g/m2 ±5% (560g/lin.m. ±5%)
Résistance à l'abrasion	100,000 cycles Martindale. Garantie de 5 ans (renseignements complémentaires disponibles)
Flammabilité	AS 1530.3, BS EN 1021 - 1:2014 (cigarette) BS EN 1021 - 2:2014 (allumette) BS 7176:2007 Low Hazard UNI 9175 Class 11M Prière de le mentionner lors de la commande: BS 5852:2006 Section 4 Ignition Source 5 si traitement FR BS 7176:2007 Medium Hazard si traitement FR Notez: Réaction au feu dépend du composite utilisé.
Solidité à la lumière	5 (ISO 105 - B02:2014)
Solidité au Frottement	Mouillé: 4 Sec: 4 (ISO 105 - X12:2002)
Nettoyage	Aspirer régulièrement. Nettoyage à sec professionnel. Autrement, essuyer avec une étoffe humide.

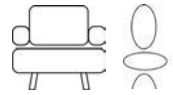
Veillez noter que le glissement de la couture sous tension dépend de la structure de la couture, de l'aiguille et du fil. Nous recommandons de prendre conseil au près d'un professionnel.
Veillez noter que nous réservons le droit de modifier les spécifications techniques sans préavis.
Les droits non-déposés sur les designs ainsi que les droits de copie sont la propriété exclusive de Camira Fabrics Limited.



hc HEAVY DUTY COMMERCIAL USE

Camira fabrics are brought to Australasia by Textilia

camira



D

Zusammensetzung	95% Schurwolle, 5% Polyamid. Nicht schwermetallhaltige Farbstoffe
Breite	140cm nutzbare Breite
Gewicht	400g/m2 ±5% (560g/lin.m. ±5%)
Scheuerfestigkeit	100,000 Martindale Scheuertouren 5 Jahre Garantie (Details auf Anfrage)
Feuersicherung	AS 1530.3, BS EN 1021 - 1:2014 (cigarette) BS EN 1021 - 2:2014 (match) BS 7176:2007 Low Hazard UNI 9175 Class 11M Bitte bei Auftragserteilung angeben: BS 5852:2006 Section 4 Ignition Source 5 wenn mit FR ausgerüstet BS 7176:2007 Medium Hazard wenn mit FR ausgerüstet Bemerkung: Schwerentflammbarkeit hängt von verwendeten Komponenten ab.
Lichtechtheit	5 (ISO 105 - B02:2014)
Reibechtheit	Nass: 4 Trocken: 4 (ISO 105 - X12:2002)
Reinigung	Regelmässig absaugen. Professionelle Trockenreinigung. Alternativ dazu mit einem feuchten Tuch abwischen.

Eine optimale Nahtausreissfestigkeit hängt von der Nahtfähe, der verwendeten Nadel und des Fadens ab. Wir empfehlen daher Nähversuche durchzuführen.
Anmerkung: Wir behalten uns die Änderungen technischer Spezifikationen vor.
Die registrierten und nicht registrierten Urheberrechte an den Dessinierungen sind ausschließliches Eigentum der Camira Fabrics Limited.

ES

Composición	70% Lana Virgen, 30% Lino. Tintes no metálicos.
Ancho	140cm mínimo
Peso	400g/m2 ±5% (560g/lin.m. ±5%)
Resistencia a la abrasión	100,000 Martindale Tours. Garantía de uso 5 años (más información disponible bajo consulta)
Inflamabilidad	AS 1530.3, BS EN 1021 - 1:2014 (cigarillo) BS EN 1021 - 2:2014 (cerilla) BS 7176:2007 Low Hazard UNI 9175 Class 11M Con tratamiento adicional de foamizado por favor especificar cuando se requiere en el pedido: BS 5852:2006 Section 4 Ignition Source 5 estando con tratamiendo FR BS 7176:2007 Medium Hazard estando con tratamiendo FR Condiciones ignifugas dependientes del tipo de foam utilizado
Solidez a la luz	5 (ISO 105 - B02:2014)
Solidez al rozamiento	Húmedo: 4 Seco: 4 (ISO 105 - X12:2002)
Limpieza	Limpiar con aspiradora con regularidad. Limpiar en seco, o bien lavar con un paño húmedo.

El deslamiendo de costura depende de su construcción así como el tipo de aguja e hilo empleados. Se recomienda que pida consejos apropiados para la costura.
Se reserva el derecho de modificar las especificaciones técnicas sin previo aviso.
Los derechos sobre dibujos no registrados y los derechos de autor sobre todos los dibujos son propiedad exclusiva de Camira Fabrics Limited.



ISO 9001:FM 26548



THE QUEEN'S AWARDS FOR ENTERPRISE SUSTAINABLE DEVELOPMENT 2015



ISO 14001:FM 35118

at work* with Camira

AUSTRALIA
telephone: 1800 173209
facsimile: 1800 723264
web: atworkwithcamira.com
email: sales@atworkwithcamira.com
*at work is a brand of Textilia

at work* with Camira

NEW ZEALAND
telephone: +64 9 3685768
facsimile: +64 9 3685769
web: textilia.co.nz
email: info@textilia.co.nz
*at work is a brand of Textilia